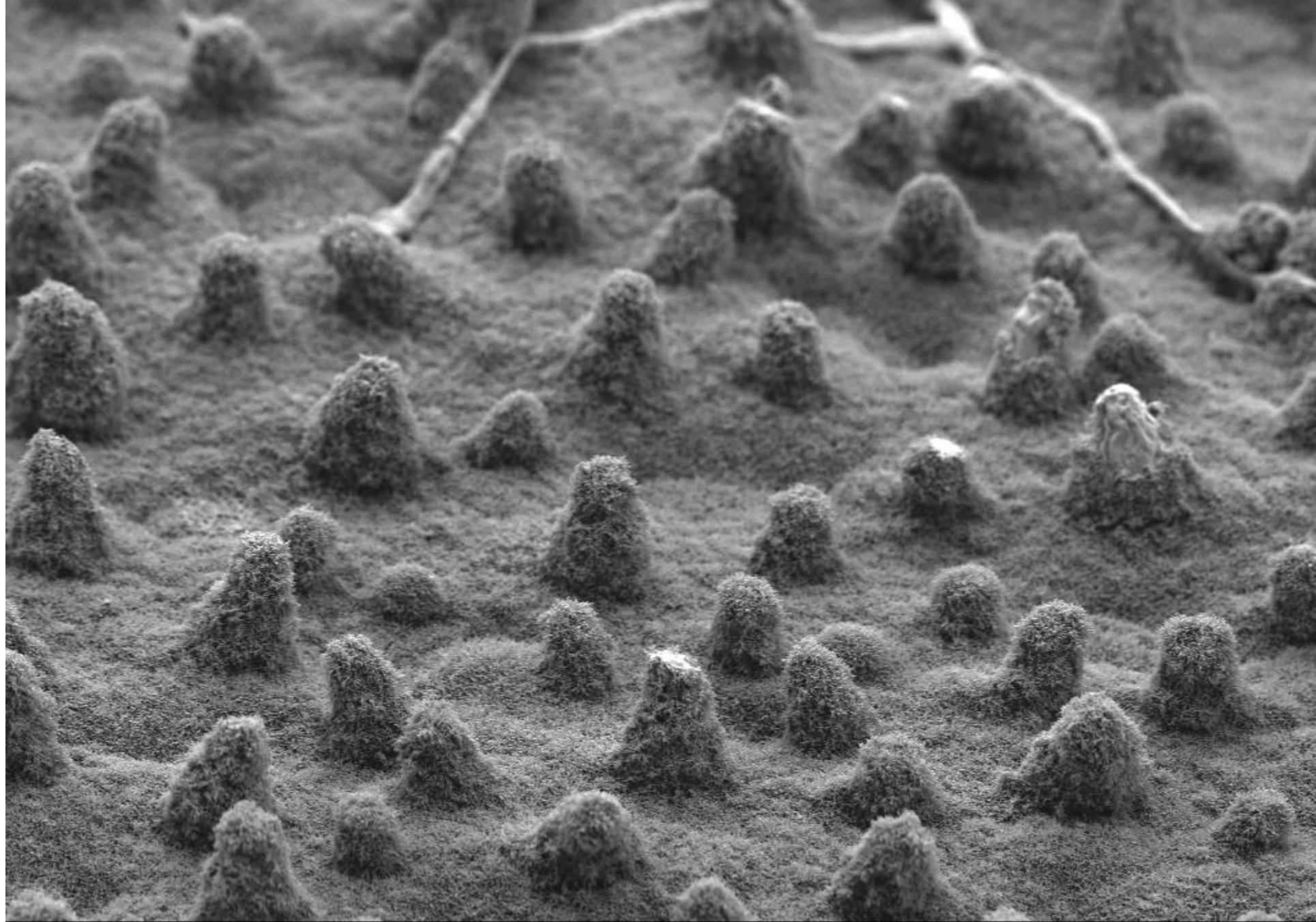


Electron Microscope image

Lotus leaf
(x 978 magnification)



A link to one of our videos about biomimicry (learning from nature)



20 μm

Voltage: 3.00 kV

Focus: 6.2 mm

Detector: SE

Mag: 978 X

Aperture: 30 μm

Pressure: 1.89e-04 Pa

Date: 27/05/2020

Time: 15:10:42

Electron Microscope image

Lotus leaf
(x 6,360 magnification)



A link to one of our videos about biomimicry (learning from nature)



4 μm

Voltage: 3.00 kV

Focus: 6.3 mm

Detector: SE

Mag: 6.36 K X

Aperture: 30 μm

Pressure: 1.87e-04 Pa

Date: 27/05/2020

Time: 15:13:25

Electron Microscope image

Lotus leaf
(x 30,100 magnification)



A link to one of our videos about biomimicry (learning from nature)



800 nm

Voltage: 2.00 kV
Focus: 5.4 mm

Detector: SE
Mag: 30.10 K X

Aperture: 30 μ m
Pressure: 3.02e-04 Pa

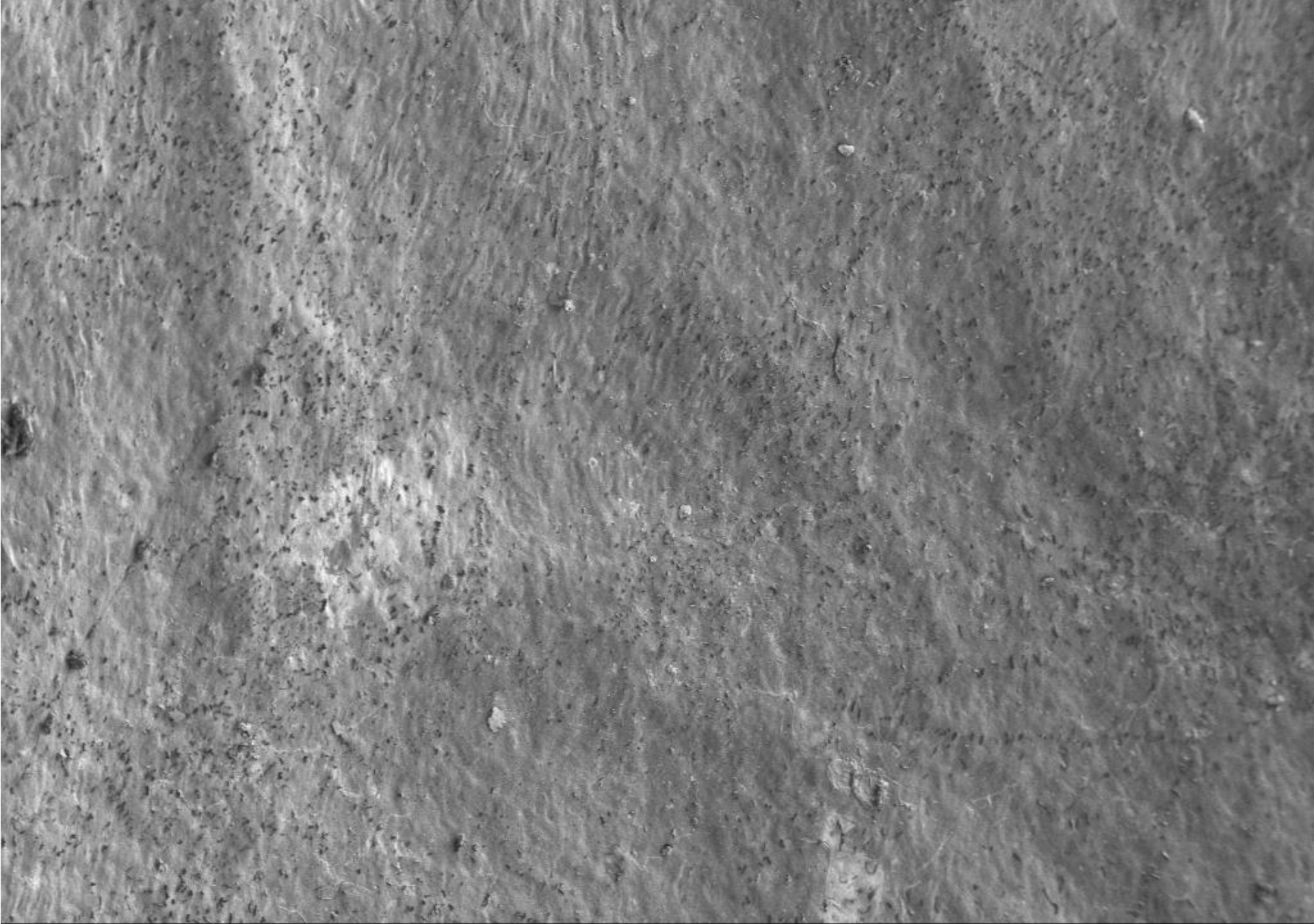
Date: 27/05/2020
Time: 14:00:59

Electron Microscope image

Holly leaf (x 100 magnification)



A link to one of our videos about biomimicry (learning from nature)



200 μm

Voltage: 1.00 kV

Detector: SE

Aperture: 20 μm

Date: 12/06/2020

Focus: 5.3 mm

Mag: 100 X

Pressure: 1.11e-03 Pa

Time: 14:03:47

Electron Microscope image

Holly leaf (x 250 magnification)



A link to one of our videos about biomimicry (learning from nature)



90 µm

Voltage: 1.00 kV

Detector: SE

Aperture: 20 µm

Date: 12/06/2020

Focus: 5.5 mm

Mag: 250 X

Pressure: 7.47e-04 Pa

Time: 14:12:38

Electron Microscope image

Holly leaf (x 1,000 magnification)



A link to one of our videos about biomimicry (learning from nature)



20 μm

Voltage: 1.00 kV

Focus: 5.5 mm

Detector: SE

Mag: 1.00 K X

Aperture: 20 μm

Pressure: 7.07e-04 Pa

Date: 12/06/2020

Time: 14:14:06

Duck Feather

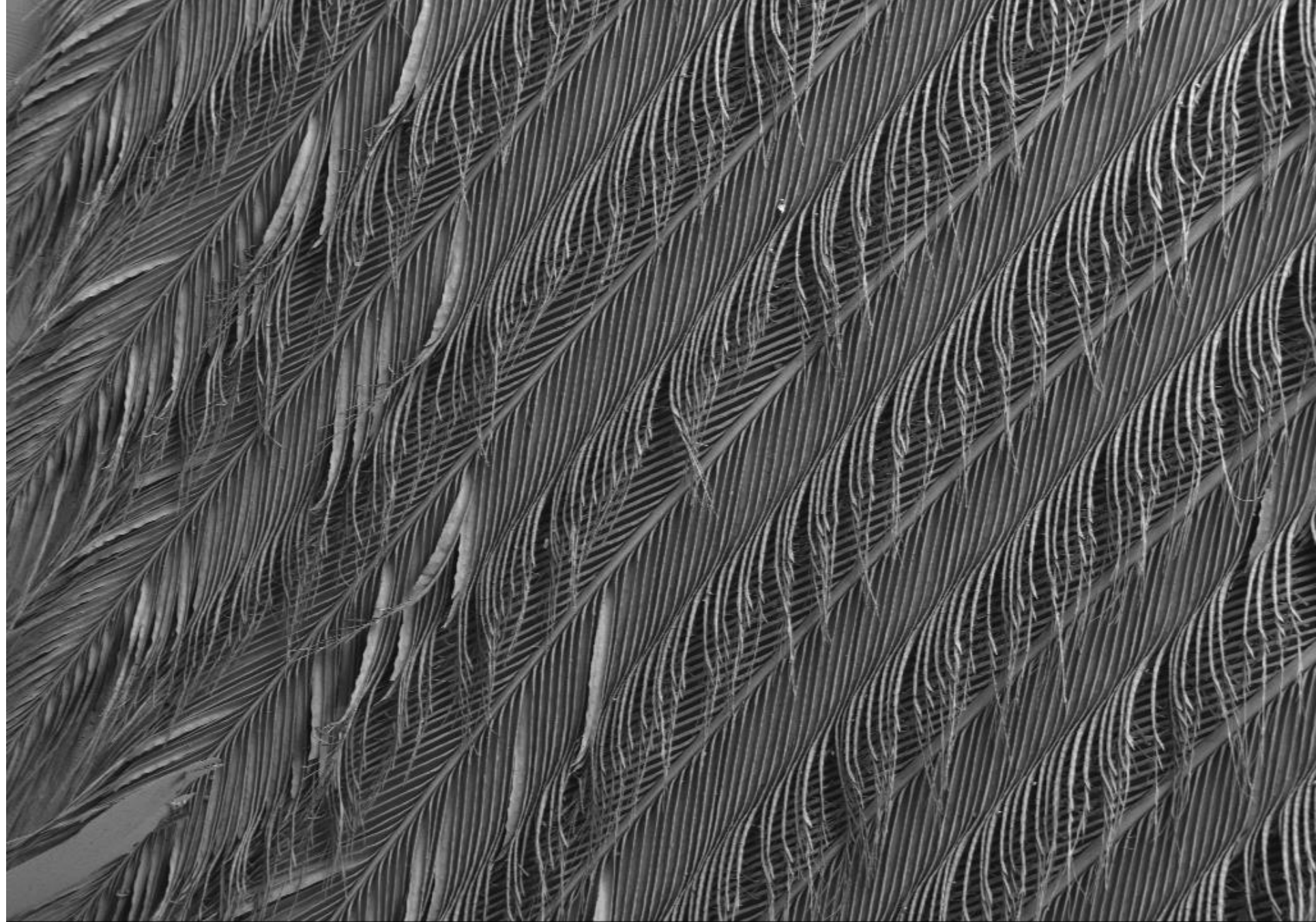
(x 47 magnification)



Seeing beyond



A link to one of our videos about biomimicry (learning from nature)



500 μm

Voltage: 3.00 kV

Detector: SE

Aperture: 30 μm

Date: 27/05/2020

Focus: 5.8 mm

Mag: 47 X

Pressure: 1.72e-04 Pa

Time: 15:35:31

Duck Feather

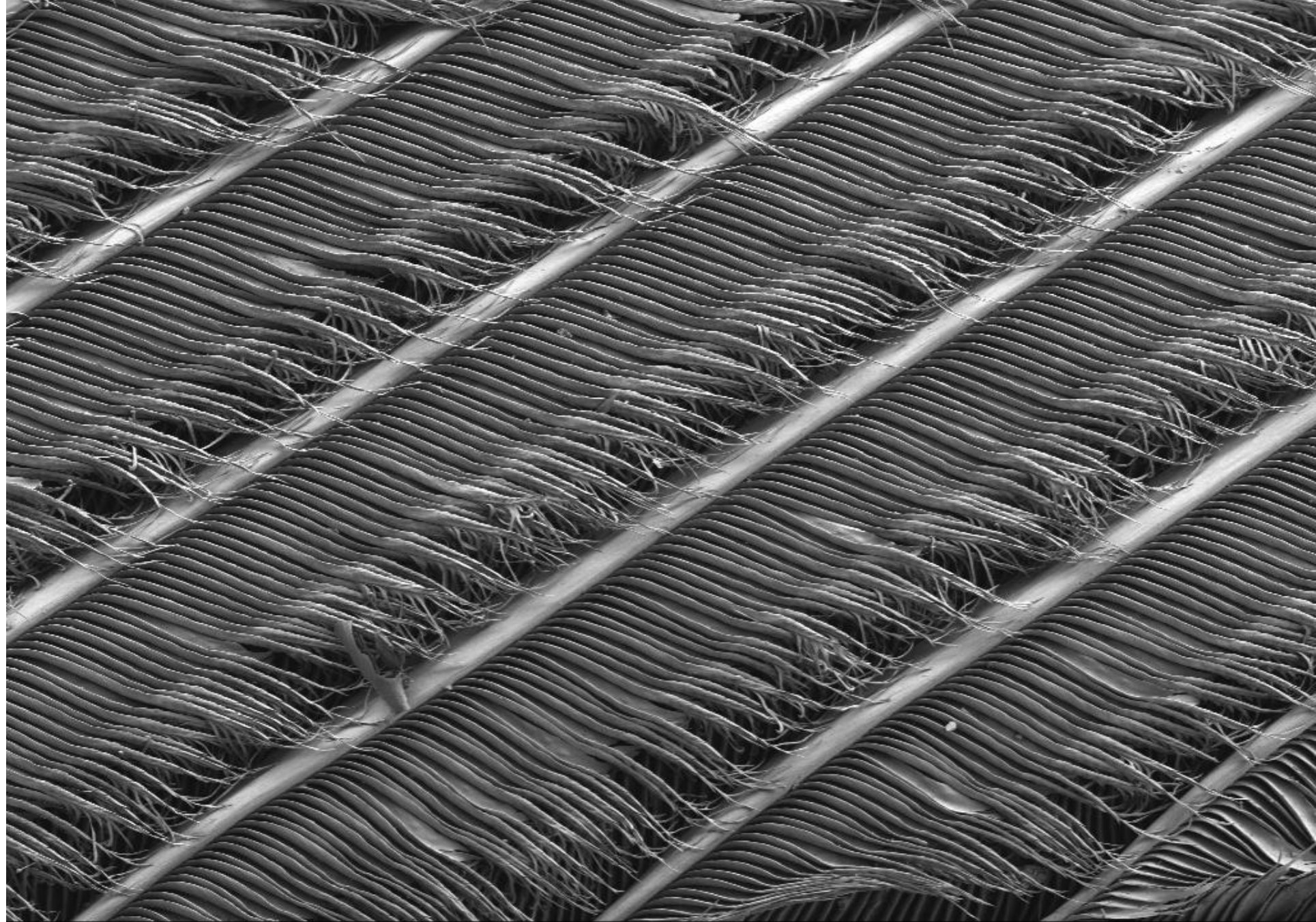
(x 73 magnification)



Seeing beyond



A link to one of our videos about biomimicry (learning from nature)



300 μ m

Voltage: 3.00 kV

Focus: 4.4 mm

Detector: SE

Mag: 73 X

Aperture: 30 μ m

Pressure: 1.65e-04 Pa

Date: 27/05/2020

Time: 15:45:23

Duck Feather

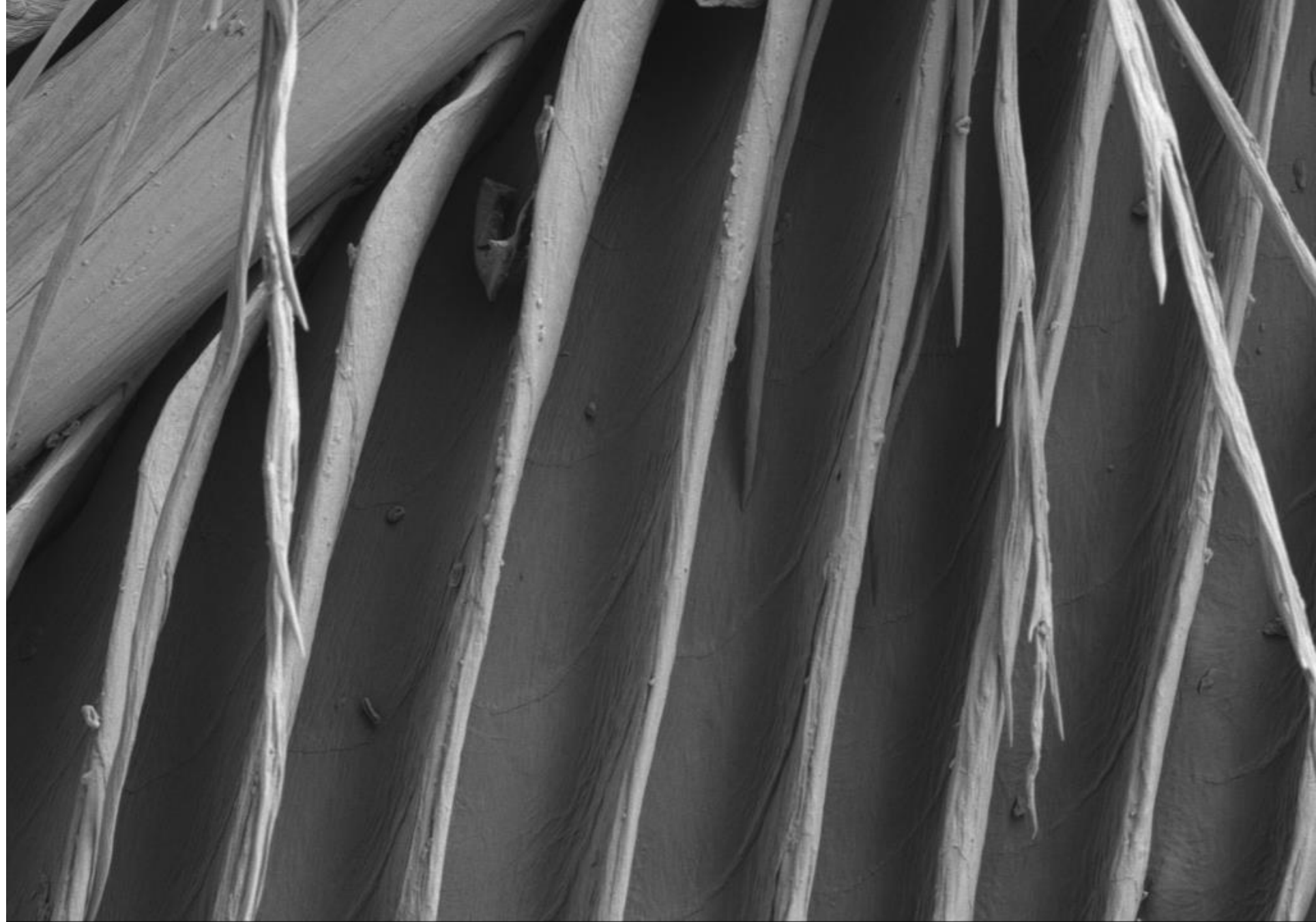
(x 860 magnification)



Seeing beyond



A link to one of our videos about biomimicry (learning from nature)



30 μm

Voltage: 3.00 kV
Focus: 5.8 mm

Detector: SE
Mag: 860 X

Aperture: 30 μm
Pressure: 1.65e-04 Pa

Date: 27/05/2020
Time: 15:42:59